

SL8330 Wardrobe LED Lighting Profile

LINEAR LIGHTING





SL8330 WARDROBE LED LIGHTING PROFILE

Superlight SL8330 Wardrobe LED mounting profile is a unique task lighting solution which is both stylish and functional. The profile can incorporate any Superlight LED Superstrip, LED Turbostrip, or LED Nanostrip product.

LED Bedroom Lighting

Superlight LED fittings installed into high-end residential project. Superlight LED solutions.



SL8330 WARDROBE LED LIGHTING PROFILE

Superlight SL8330 Wardrobe LED mounting profile is a unique task lighting solution which is both stylish and functional. The profile can incorporate any Superlight LED Superstrip, LED Turbostrip, or LED Nanostrip product.

SPECIFICATIONS

Standard Profile Length:	2mtr
Custom Lengths Available:	Yes
Profile Diameter:	24mm OD
Standard Finish:	Anodised Silver
Custom Colours/Finishes:	Dulux Powdercoat
Compatible LED Product:	Superlight LED Strip
Lens:	Opal Acrylic Lens Insert

PHOTOMETRIC INFORMATION

Photometric performance is dependant on LED configuration.

TYPICAL APPLICATIONS

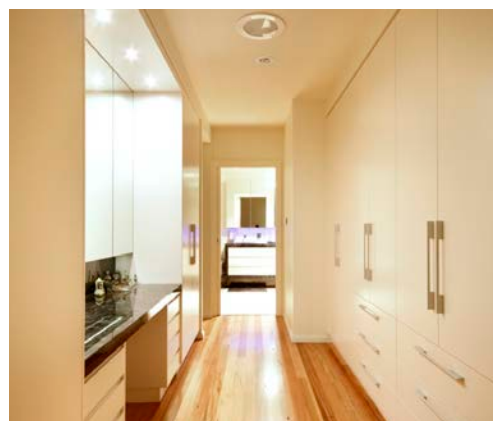
High end residential projects - wardrobe lighting solution, Clothing fashion retail displays

CUSTOMIZATION OPTIONS

Supplied in custom lengths as required
Various LED configuration options
Mounting profile can be powdercoated or refinished by request
Dimmable single colour or white-mix CCT control options

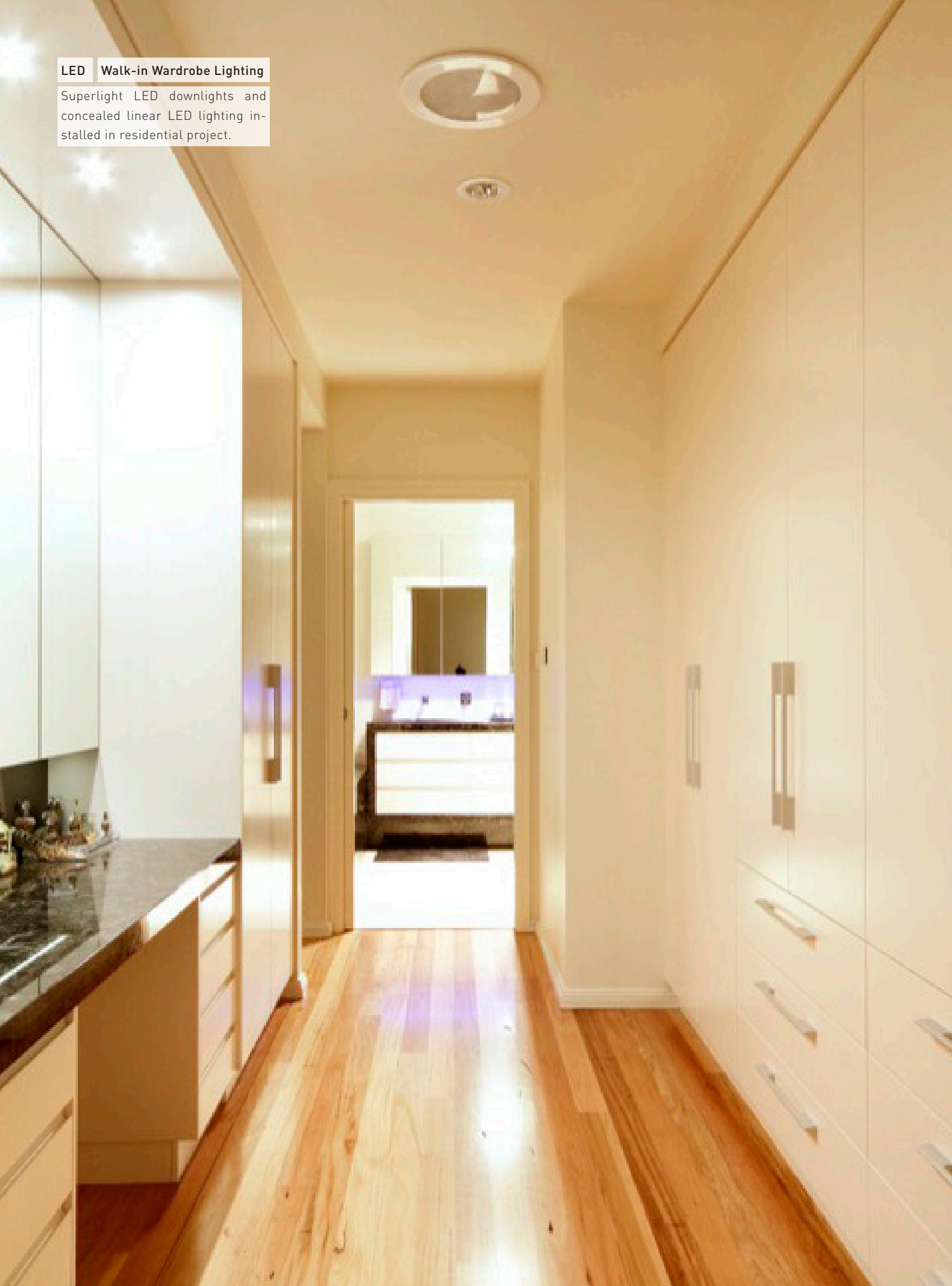
ORDERING INFORMATION

- SL8330-00 Superlight 24mm Round Wardrobe LED Mounting Profile
- SL8330-12 Opal Polycarbonate Lens Diffuser to suit Wardrobe Profile
- SL8330-55 Moulded Polycarbonate Wall Bracket to suit Wardrobe Profile



LED Walk-in Wardrobe Lighting

Superlight LED downlights and concealed linear LED lighting installed in residential project.



Superlight™

AUSTRALIA

SYDNEY HEAD OFFICE MANUFACTURING & SHOWROOM

2/386 Botany Rd, Rosebery NSW 2015
PH. 02 9699 7302 FAX. 02 9699 7304

MELBOURNE SALES OFFICE

PH. 03 9949 8930 FAX. 03 8601 1180

BRISBANE SALES OFFICE

PH. 07 3167 6500 FAX. 07 3167 6501

PERTH SALES OFFICE

PH. 08 9468 2800 FAX. 08 9278 2525

NEW ZEALAND

AUCKLAND SALES OFFICE

PH. 09 360 9335 FAX. 09 579 2063

TAURANGA SALES OFFICE

PH. 07 575 6762 FAX. 07 75 6764

WWW.SUPERLIGHT.COM.AU

WWW.SUPERLIGHT.CO.NZ



All electrical and lighting installations should be carried out by a suitably licensed electrician.

It is the responsibility of the installer to ensure that installation and fixing methods are suitable for the application and local environment. Check that the fixing methods, recommended ambient operating temperature, and the IP rating of the product(s) are definitely suited to the application. We recommend all aspects of installation are discussed amongst all relevant parties such as designers, installer and end-users prior to installation taking place to ensure the best outcome.

Product Warranty

All Superlight products are covered by a replacement warranty. The product warranty covers the replacement or repair of the product only. A product that has failed under warranty must be returned to Superlight or the place of purchase for evaluation. Important: Only the product is covered under the warranty. Incidental costs such as delivery costs, installation costs, labour or accessories etc are not covered under warranty. See our warranty policy for further information.

All product specifications are subject to change without notice. Superlight reserves the right to change the specifications, functions, voltage or circuit design of any product without notice. While every precaution has been taken in the preparation of this document, Superlight assumes no liability for errors or omissions.