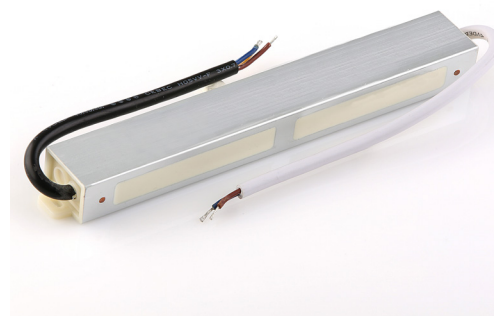


Superlight SL1130 Slimline LED Driver 30W

Superlight SL1130 is a high quality and reliable constant voltage LED driver suitable for indoor and outdoor use. The driver features a toughened case with sealed tails for both primary and secondary connections. The driver is especially designed for use with Superlight linear LED systems and its slimline dimensions allow it to be installed within mounting profiles such as Superlight HLP5050.



SPECIFICATIONS

Model:	SL1130-12	SL1130-24
Input Voltage:	100-240VAC	100-240VAC
Output Voltage Options:	12VDC	24VDC
Voltage Output Configuration:	Constant Voltage	Constant Voltage
Max Power Output Watts:	30W	30W
Max Output Current:	2.5A	1.25A
Typical Efficiency:	→80%	→80%
Dimensions:	220x55x30mm	220x55x30mm
Mains Connection:	Hard Wired	Hard Wired
DC Connection Method:	Low Voltage Wiring	Low Voltage Wiring
Thermal Management:	Convention Cooling	Convention Cooling
Recommended Ambient Temperature:	-10 ~ +40°C	-10 ~ +40°C
IP Protection Rating:	IP65	IP65

TYPICAL APPLICATIONS

Integrating into Superlight linear LED profile systems
Domestic and commercial LED lighting installations.
Superlight constant voltage LED strips, modules and fittings.

LIGHTING SYSTEM DESIGN

Superlight can provide detailed design services for your project, including wiring schematics and lighting control system design. Contact us for more information.

INSTALLATION GUIDELINES

- Suitable for both indoor and outdoor applications IP65
- Ensure device is installed in location with good thermal management
- Ensure load does not exceed 80% of rated output
- Lighting installations should be carried out by professional electrical contractor

ORDERING INFORMATION

- SL1130-12 Slimline Constant Voltage LED Driver 30W 12VDC IP65
- SL1130-24 Slimline Constant Voltage LED Driver 30W 24VDC IP65