

SL2810 RGB WALL LIGHT FIXTURE

The SL2810 series architectural wall light fixtures incorporate a stylish brushed metal body with the latest power LED technology to deliver excellent illumination and low power consumption. They consume minimal energy and require zero lamp maintenance. The SL2810-RGB wall light fittings can be controlled by any Superlight LED controller for full colour-control capability.

SPECIFICATIONS

Input Voltage:	12 VDC
Power Consumption:	6 Watts
LED Quantity:	6 x 1W
LED Classification:	High Power SMD RGB
Body Dimensions:	150mm x 50mm
Projection From Wall:	79mm
Fixture Material:	Alloy
No Of Possible LED Colours:	16.7 Million +
Colour Change Control Via:	Superlight RGB Controller
IP Protection Rating:	IP20 Indoor Use Only
Standard Finish/Colour:	Brushed Satin Silver
Optional Powder Coat Finish:	Any Dulux Finish

PHOTOMETRIC INFORMATION

SL2810-35 RGB Colour Controllable
Detailed photometric report and IES files available by request

TYPICAL APPLICATIONS

The fittings are suitable for high-end residential & commercial projects, office fitouts, board rooms, retail & hospitality projects.

CONTROL & DIMMING COMPATIBILITY

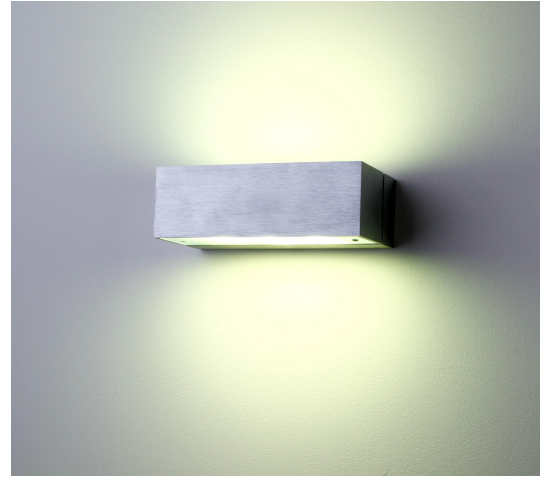
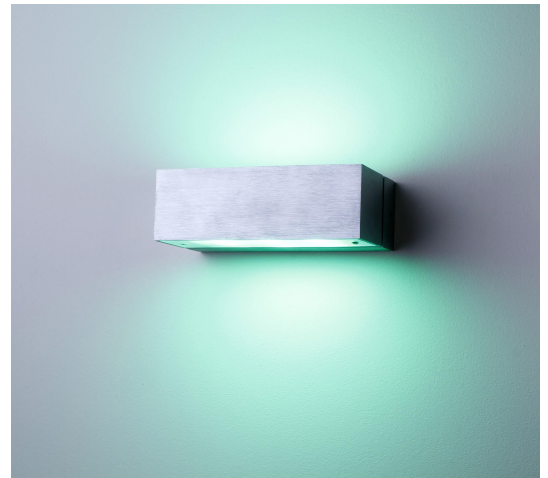
Superlight DMX512, DALI, Analogue 1-10V Protocol
Superlight Stand alone RGB controller

ORDERING INFORMATION

SL2810-35 6W Architectural Wall Light Fixture 12VDC RGB

CUSTOMISATION OPTIONS

Trim colour can be refinished
Can be controlled via DALI, DMX512 or 1-10V Analogue controller.
Customisation options are subject to availability and minimum order quantities



All product specifications are subject to change without notice. Superlight accepts no liabilities as a result of errors, updates or omissions. Please re-confirm all product details prior to ordering.