

## SL2968 Superlight 30W RGBW LED Downlight

The Superlight SL2968 is a modern commercial LED downlight fixture fitted with Superlight RGBW LED technology. The fitting can be used with any compatible Superlight lighting controller to deliver rich and vibrant colour output in addition to natural white tones when required. This makes the fitting ideal for projects that demand a versatile lighting solution.

### SPECIFICATIONS

Input Voltage:	24VDC RGBW Input
Control Channels:	4 RGBW
Max Power Consumption:	30W
Trim Diameter:	185mm
Ceiling Cutout:	165mm
LED Classification:	Superlight RGBW SMD
LED Configuration:	R/G/B+3000K
Trim Colour/Finish:	Matt White
Fixture Material:	Aluminium with Opal PMMA
Beam Options:	60°
Control Method:	Superlight RGBW Controller
Available Control Protocols:	DMX512 / DALI / RF Wireless
Recommended Ambient Temp:	-10 ~ +40°C
IP Protection Rating:	IP44

### PHOTOMETRIC INFORMATION

SL2968-45 CCT: RGB+3000K CRI: >85

Detailed photometric report and IES files available by request

### TYPICAL APPLICATIONS

SL2968 RGBW downlights are ideal for entertainment venues, theatres, bars, restaurants, hospitality projects games rooms, events and showrooms.

### CONTROL & DIMMING COMPATIBILITY

SL2968 RGBW downlight is a dimmable and colour tunable RGB+W fitting which can be controlled via any Superlight multi-channel controller such as SL5439 and SL5435. Other available control protocols include DMX512, DALI, 1-10V.

### ORDERING INFORMATION

SL2968-45 Superlight LED Downlight SMD RGBW LED 30W 24VDC

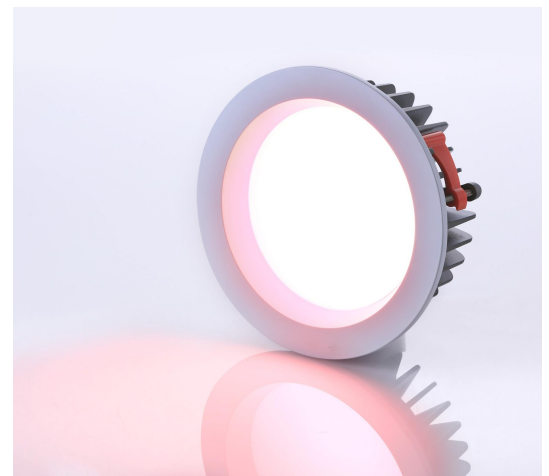
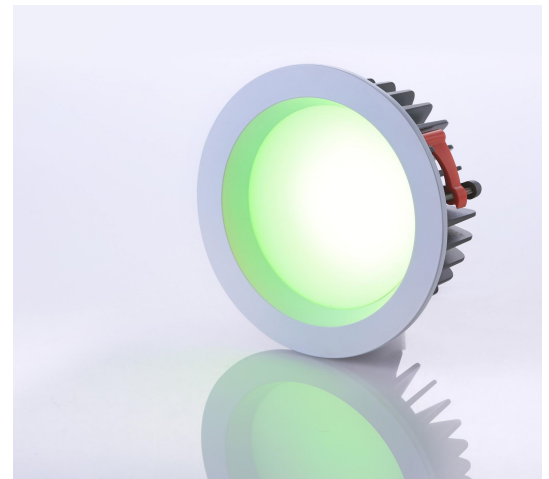
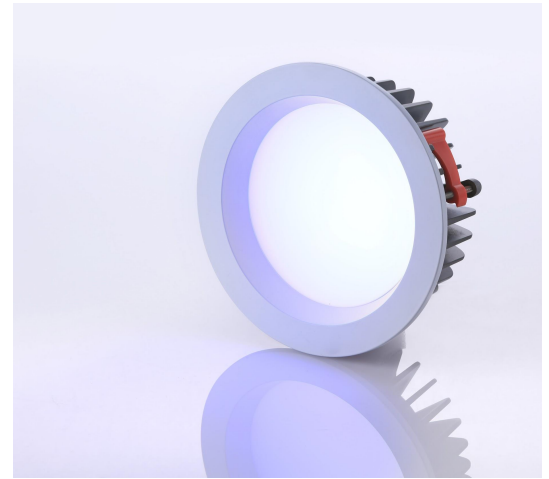
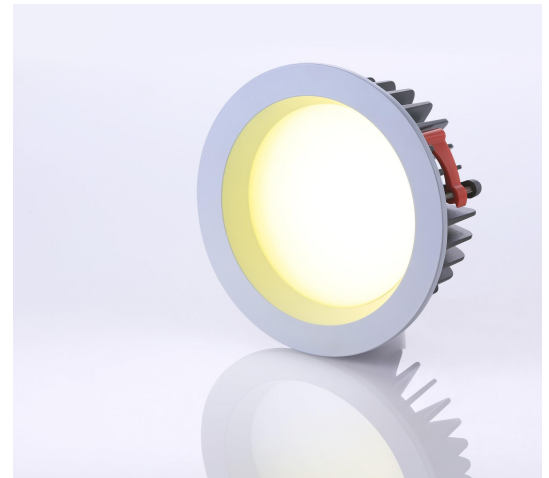
### CUSTOMISATION OPTIONS

Trim colour can be refinished by special request

Superlight can customise suitable control solutions for any project

Product can be interfaced to other systems such as CBUS, Dynalite etc

\*\*Custom options may be subject to minimum order quantities



All product specifications are subject to change without notice. Superlight accepts no liabilities as a result of errors, updates or omissions. Please re-confirm all product details prior to ordering.