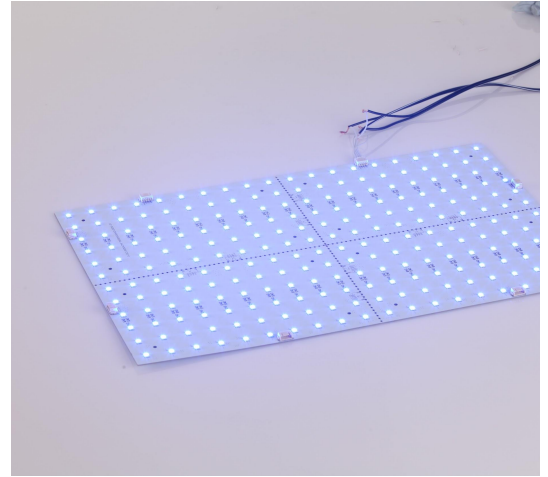
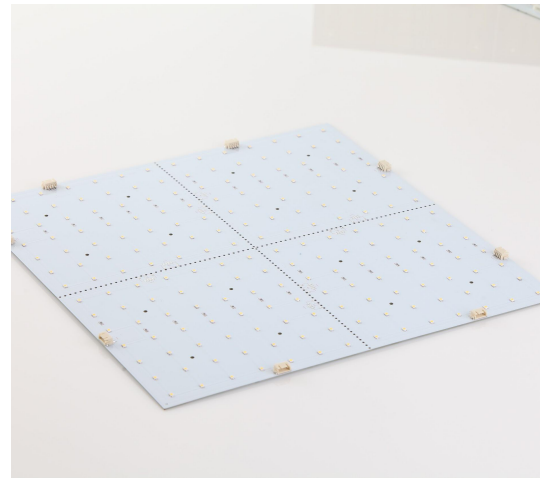


SL7160 DSMD BACKLIGHT LED PANEL TILES

Superlight DSMD LED panel tiles are ideal for backlighting and concealed lighting projects that require a high quality uniform light source. DSMD LED panel tiles are available in RGB or static colour options.

SPECIFICATIONS

Part Number:	SL7164	SL7165
Input Voltage:	24VDC	24VDC
Max Power Consumption:	13.44W	57.6W
LED Quantity (per tile):	196	60
LED Classification:	3528 SMD	RGB 5050 SMD
Viewing Angle:	120°	120°
Dimensions:	400 x 400mm	500 x 300mm
Operating Temperature:	-5 ~ +55°C	-5 ~ +55°C
No of Possible Defined Colours:	Static Colour	16.7 Million+
Control or Dimming Signal:	PWM	RGB Controller/DMX



PHOTOMETRIC INFORMATION

SL7164-15	CCT: 6500K CRI: >80
SL7164-17	CCT: 4200K CRI: >82
SL7164-21	CCT: 3200K CRI: >85
SL7165-35	RGB Colour Controllable

Detailed photometric report and IES files available by request

TYPICAL APPLICATIONS

Superlight DSMD LED panel tiles are suitable for backlighting projects and decorative backlighting of feature walls and diffuse panels.

CONTROL & DIMMING COMPATIBILITY

SL5009 DMX Controller
Superlight DALI controller
Superlight constant voltage LED drivers

ORDERING INFORMATION

SL7164-15	400x400mm 13.4W LED Panel Tile 6500K Cool white
SL7164-17	400x400mm 13.4W LED Panel Tile 4200K Neutral white
SL7164-21	400x400mm 13.4W LED Panel Tile 3200K Warm white
SL7165-35	500x300mm 57.6W LED Panel Tile RGB

CUSTOMISATION OPTIONS

Custom tile sizes available by request
Superlight can supply custom controller options including DMX
Custom mounting options can be supplied by request
Customisation options are subject to availability and minimum order quantities

All product specifications are subject to change without notice. Superlight accepts no liabilities as a result of errors, updates or omissions. Please re-confirm all product details prior to ordering.