

SL9672 RGBW OPTO-4 LED PROJECTOR FITTING

Superlight Opto-4 is a high powered LED projector suitable for wall washing and other architectural accent lighting for commercial projects. The Opto-4 series is fully controllable and incorporates both RGB + White LED modules and is constructed from UV stable materials which makes it suitable to meet any architectural requirement.

SPECIFICATIONS

Input Voltage:	24VDC
Max Power Consumption:	100W
Dimensions:	246x175x78mm
LED Qty:	2 x 6pcs
LED Classification:	Superlight High Power RGBW
Colour/Finish:	Black Powdercoat
Beam Angle Options:	30° / 50° / 70°
Mounting Method	Multi-Adjustable Trunnion Bracket
Fixture Material:	Aluminium with PMMA Visor
Recommended Ambient Temp:	-10° -40°C
Control Method:	Superlight RGBW Controller
IP Protection Rating:	IP65

PHOTOMETRIC INFORMATION

SL9672-45 RGBW Opto-4 CCT: RGB+3000K CRI: >85 (WHITE LED)
Photometric performance can vary depending on control method
Detailed photometric report and IES files available by request

TYPICAL APPLICATIONS

Applications include accent lighting, colour-washing, spotlighting, architectural highlights, building facades, landscape & garden lighting applications, museums, galleries, retail environments, airports, hotels, hospitality projects, signage illumination etc.

CONTROL & DIMMING COMPATIBILITY

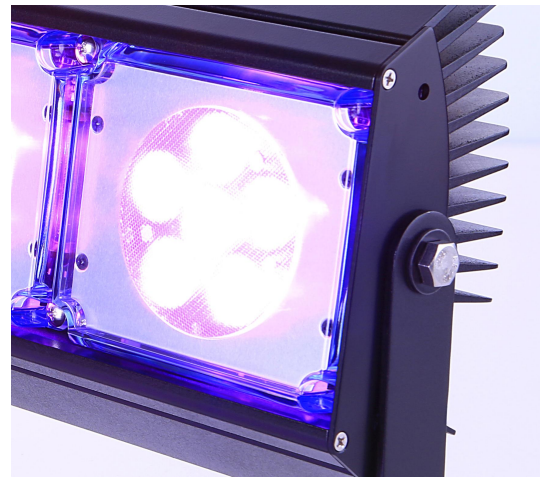
Superlight Opto-4 is a dimmable RGB+W fitting which can be controlled via any Superlight multi-channel controller such as SL5439 and SL5435. Other available control protocols include DMX512, DALI, 1-10V.

ORDERING INFORMATION

SL9672-45 Superlight Opto-4 Projector Fitting Black 100W RGB+W
** Specify Beam angle: 30° / 50° / 70°

CUSTOMISATION OPTIONS

Fixture colour can be refinished
Optional 3-circuit track mount adaptor
White LED channel CCT can be



All product specifications are subject to change without notice. Superlight accepts no liabilities as a result of errors, updates or omissions. Please re-confirm all product details prior to ordering.